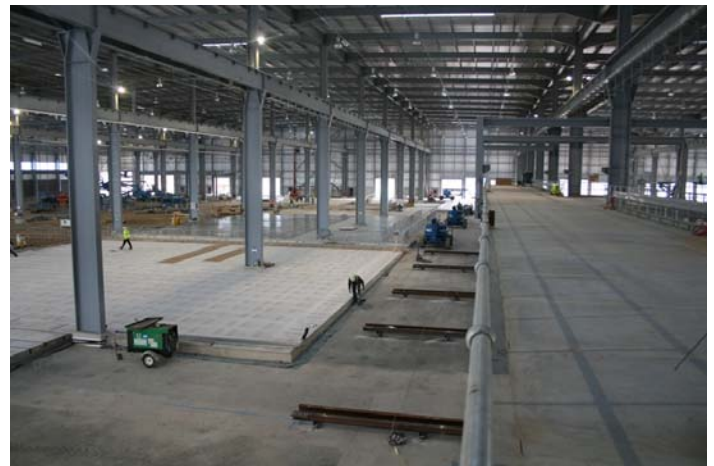


STEETLEY Manufacturing Facilities is a Slab on ground for manufacturing of precast units using state of art technology.

Location	Worksop, Nottinghamshire
Year of completion	2009
Type of structure	Industrial – Slab on ground
Owner	Laing O’Rourke Manufacturing
Architect	CPMG

Consultants	Waterman Structures
Main Contractor	Laing O’Rourke
Frame Contractor	Expanded Structures
Project Cost	NA
Project Size	24,600 sq m.



Original proposed RC solution was a 300mm thick slab but by using post-tensioning and benefitting from the improved load distribution and performance of a PT slab, this thickness was reduced to 180mm. Being a production facility the slab (approx grid size 150m x 165m) had to be designed to accommodate: -

- for 10tonnes storage racking loads at 2metres centres in areas
- for various operational equipment (5Tonne forklift trucks)
- for random traffic / delivery i.e. highway (HA + HB) loading
- numerous industrial pits and trenches



PT Contractor	STRONGFORCE
PT Designer	Alliance Design UK Ltd
PT System	Bonded Flat Duct 3-4-5 MonoStrand system (12.9mm)
PT tonnage	135 Metric Tonnes
Project Duration for PT works	29 weeks

